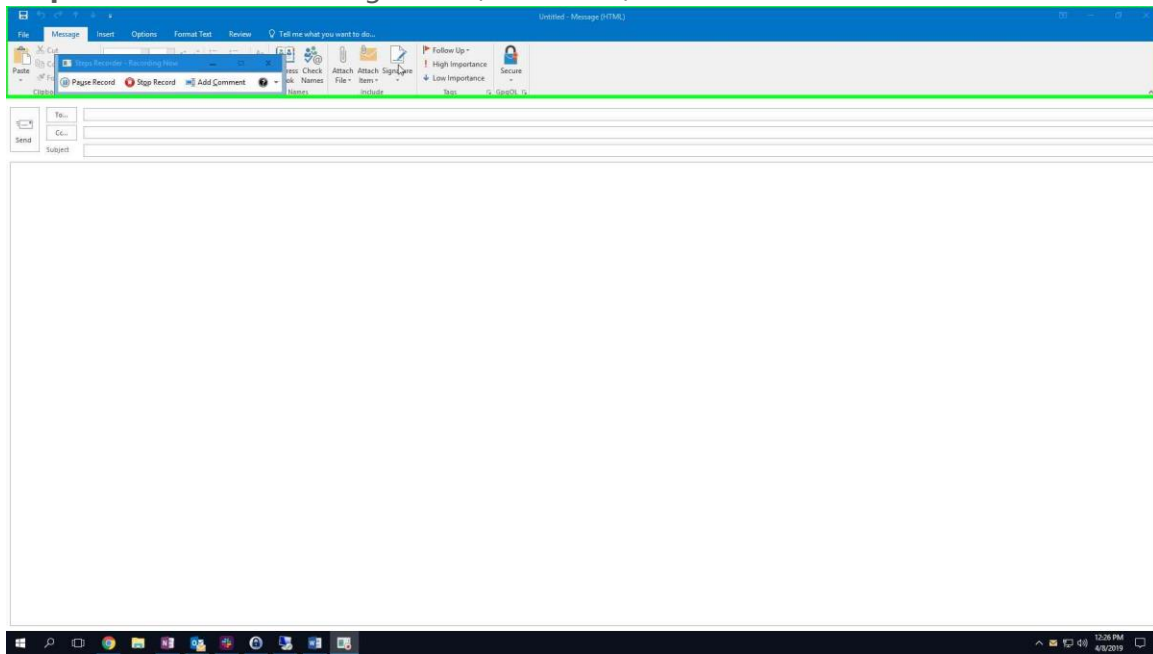
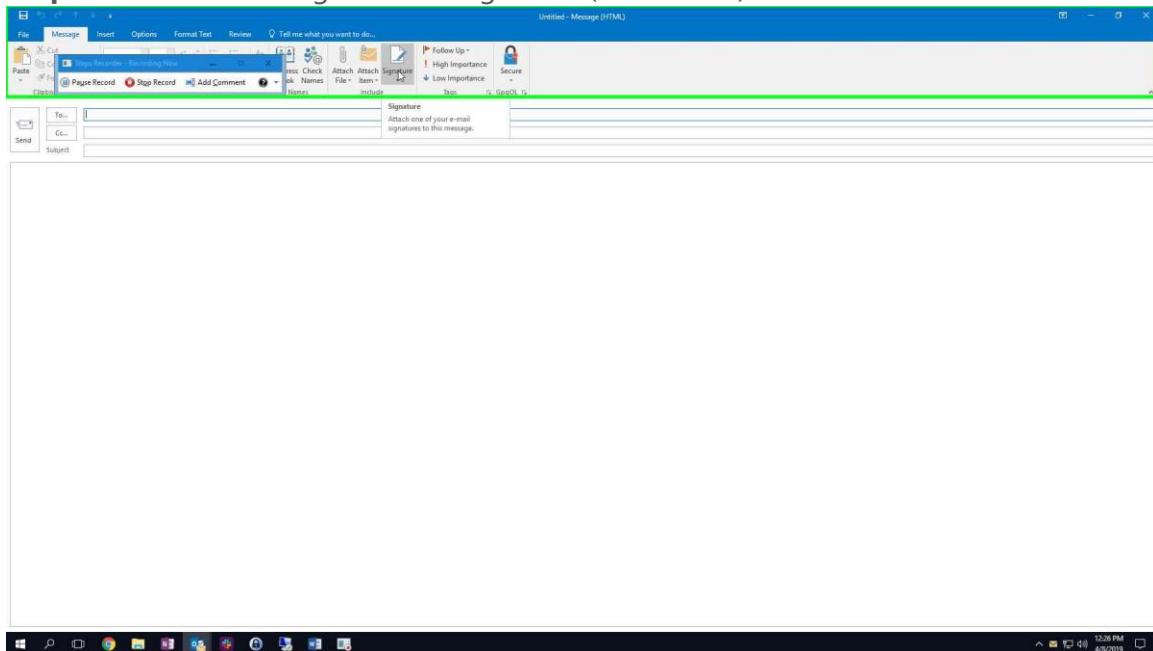


Step 1: User left click on "Signature (Menu Item)"



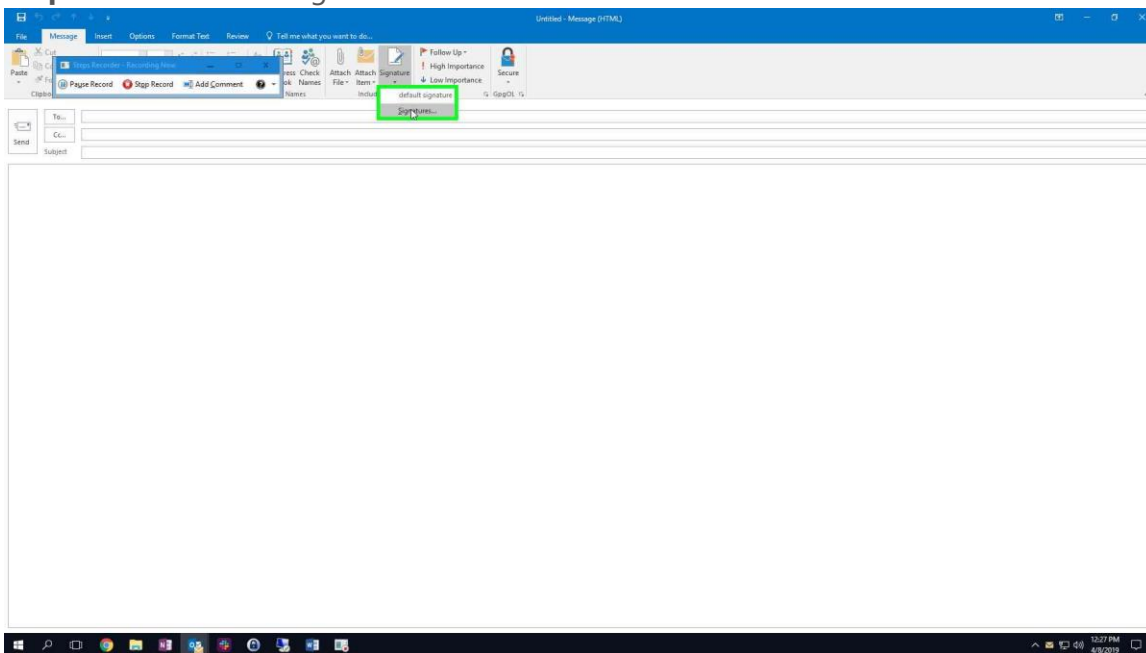
Step 1 screenshot.

Step 2: User mouse drag start on "Signature (Menu Item)"



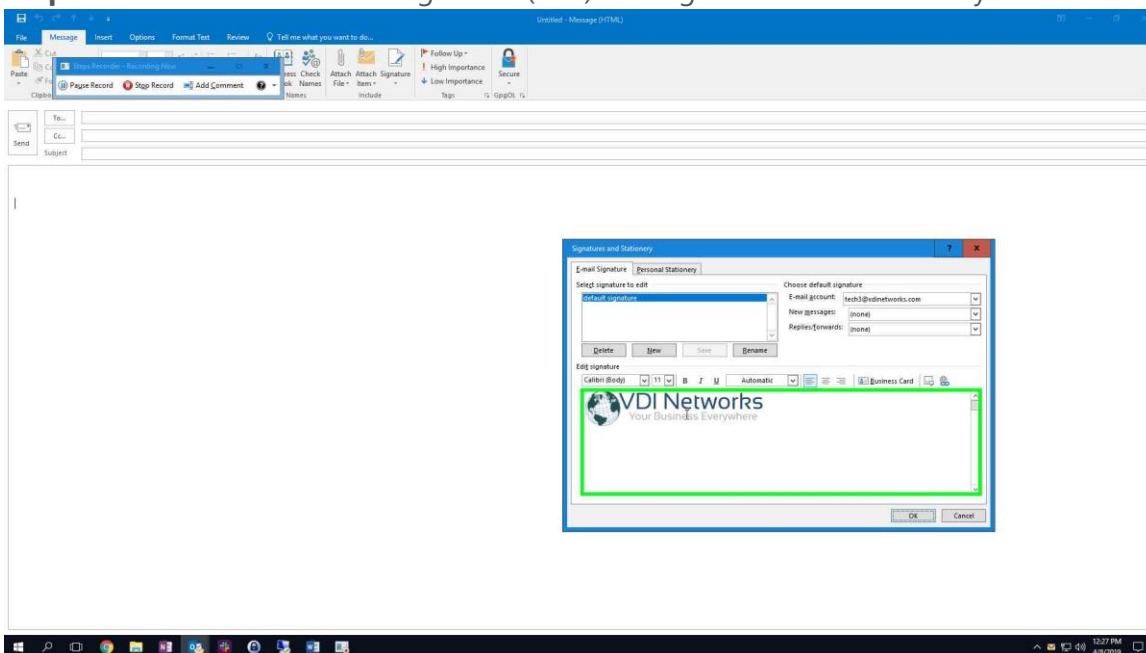
Step 2 screenshot.

Step 3: User mouse drag end



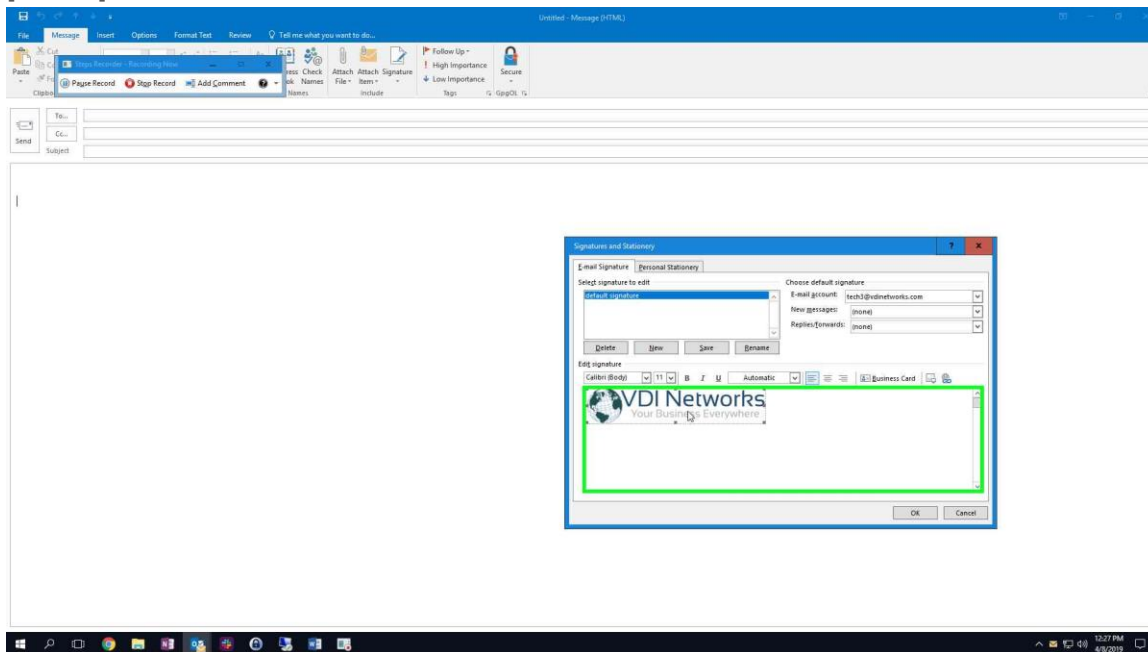
Step 3 screenshot.

Step 4: User left click on "Edit signature (edit)" in "Signatures and Stationery"



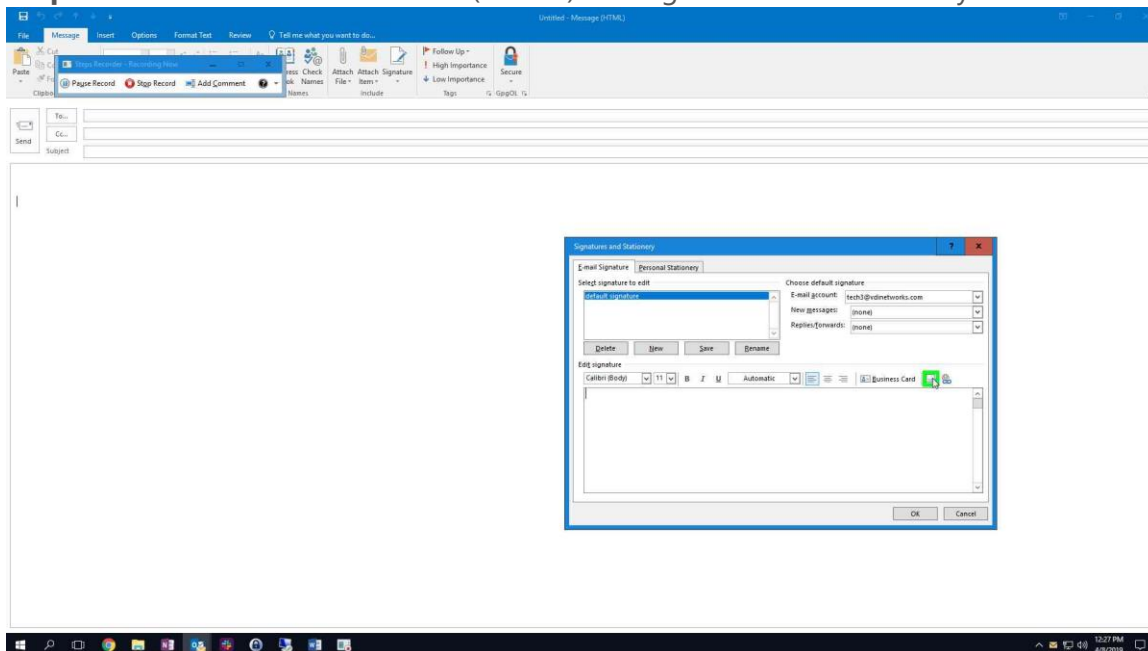
Step 4 screenshot.

Step 5: User keyboard input on "Edit signature (edit)" in "Signatures and Stationery"
[Delete]



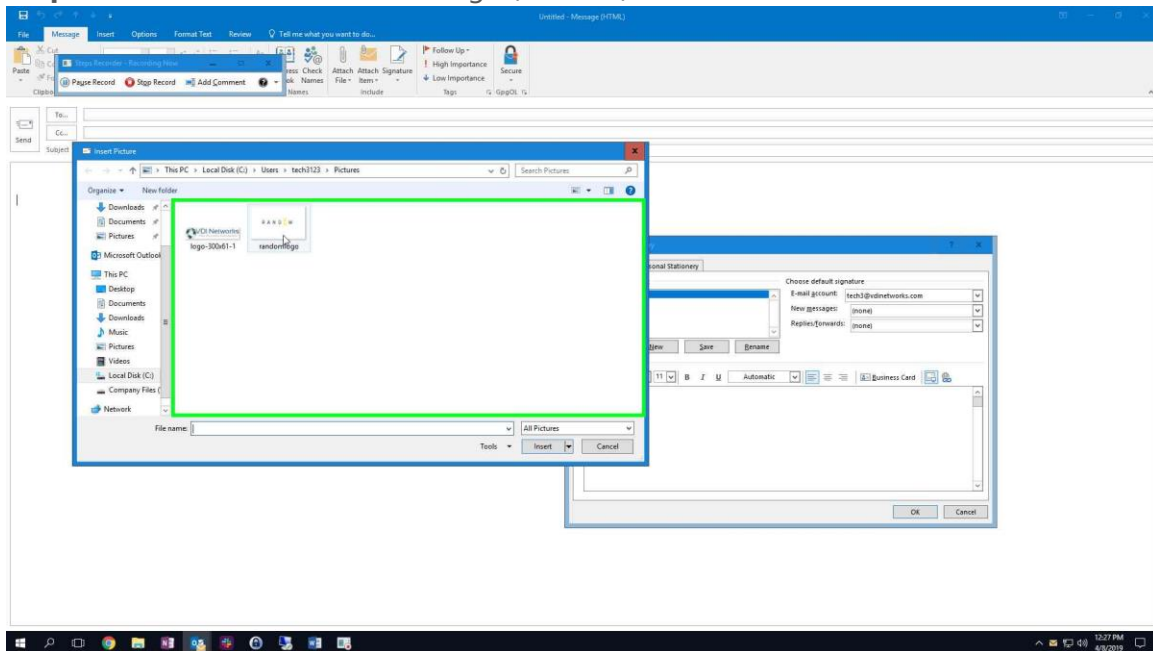
Step 5 screenshot.

Step 6: User left click on "Pictures... (button)" in "Signatures and Stationery"



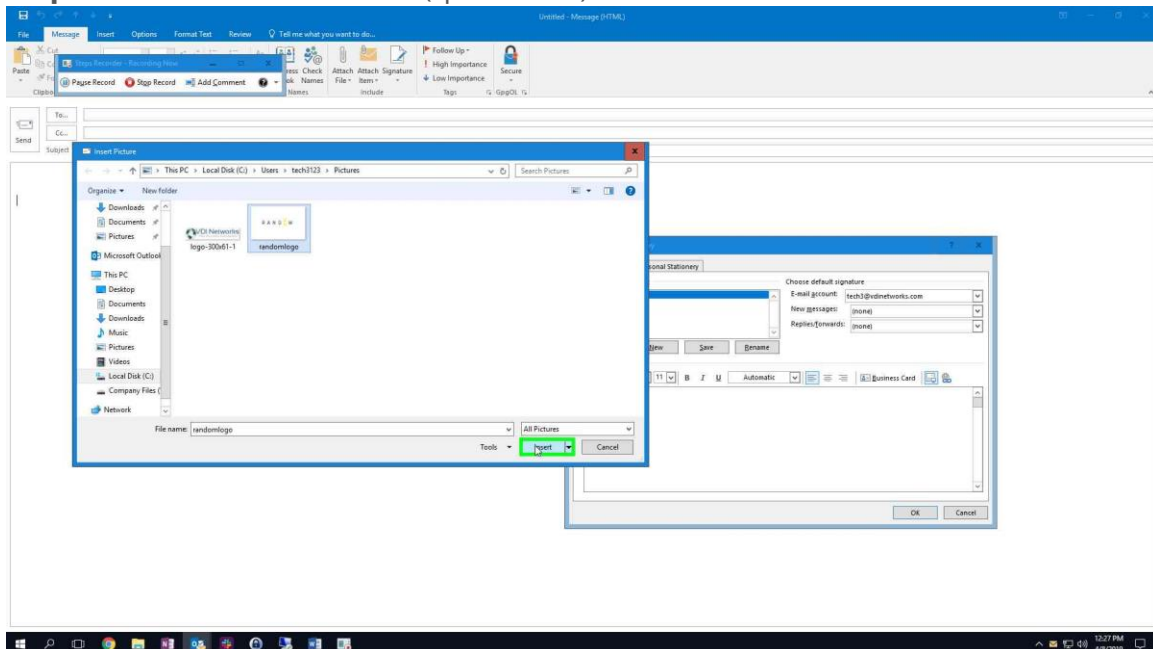
Step 6 screenshot.

Step 7: User left click on "randomlogo (list item)" in "Insert Picture"



Step 7 screenshot.

Step 8: User left click on "Insert (split button)" in "Insert Picture"



Step 8 screenshot.

Step 9: User left click on "OK (button)" in "Signatures and Stationery"

